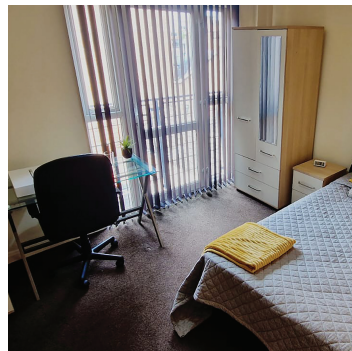


# Courthouse Apartments

6 Bowling Green Street, Leicester, LE1 6AT

7 minute walk to DMU & 20 minute walk to UOL

1, 2, 3 & 4 Bedroom  
Apartments  
from £95<sup>pppw</sup>



## Key Features

- 🏠 No deposit required
- 🏠 £250 energy allowance per person provided
- 🏠 Free WIFI connection
- 🏠 Less than a 10 minute walk to DMU
- 🏠 Prime City Centre location
- 🏠 Spacious apartments
- 🏠 Modern kitchens
- 🏠 Shared bathroom with bath and overhead shower
- 🏠 Washer/dryer provided
- 🏠 Tenants pay own electric
- 🏠 Water rates included

## RENTAL PRICES

1 BEDROOM  
2 BEDROOM

£170pw  
£125pppw

3 BEDROOM  
4 BEDROOM

£115pppw  
from £95pppw

**RESERVE YOUR ROOM NOW!!**

Contact our student friendly staff

**0116 254 0541**

[infodmu@westmanorstudentliving.co.uk](mailto:infodmu@westmanorstudentliving.co.uk)

[www.westmanorstudentliving.co.uk](http://www.westmanorstudentliving.co.uk)

Scan to  
see more  
information on  
our website!



**westmanor**  
STUDENT LIVING   
For the **best** selection of  
**student accommodation** in Leicester