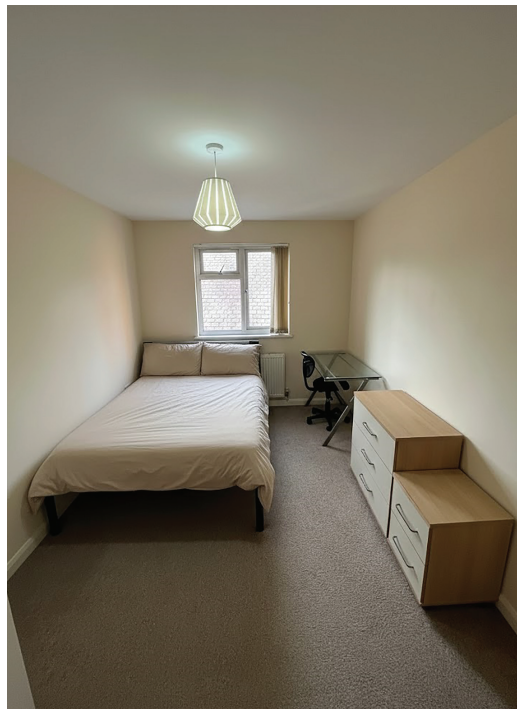
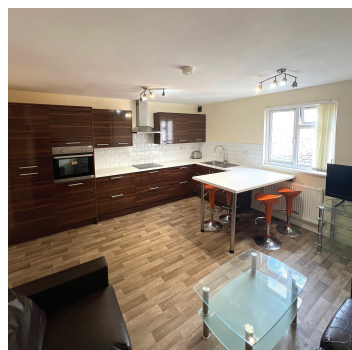
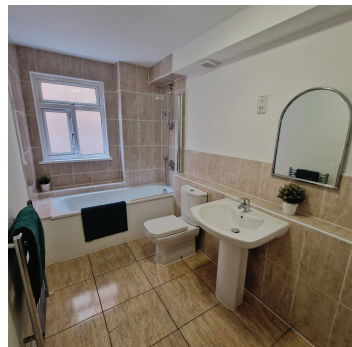


Courthouse Apartments

6 Bowling Green Street, Leicester, LE1 6AT

7 minute walk to DMU & 20 minute walk to UOL

1, 3 & 4 Bedroom
Apartments
from £477pppw



Key Features

- 🏠 No deposit required
- 🏠 £250 energy allowance per person provided
- 🏠 Free WIFI connection
- 🏠 Less than a 10 minute walk to DMU
- 🏠 Prime City Centre location
- 🏠 Spacious apartments
- 🏠 Modern kitchens
- 🏠 Shared bathroom with bath and overhead shower
- 🏠 Washer/dryer provided
- 🏠 Tenants pay own electric
- 🏠 Water rates included

RENTAL PRICES

1 BEDROOM

3 BEDROOM (SHARED BATHROOM)

4 BEDROOM (SHARED BATHROOM)

SOLD OUT

£498pppm

£477pppm

RESERVE YOUR ROOM NOW!!

Contact our student friendly staff

0116 254 0541

infodmu@westmanorstudentliving.co.uk

www.westmanorstudentliving.co.uk

Scan to
see more
information on
our website!



westmanor
STUDENT LIVING 

For the *best* selection of
student accommodation in Leicester